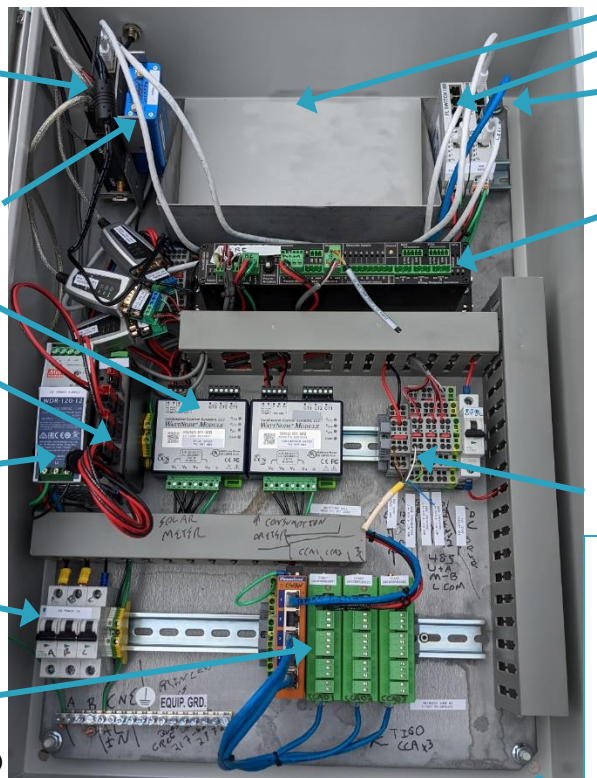


SolarSCADA

Fully Modular SCADA specifically for Solar

- Linux-based Site Computer
On private-keyed VPN
- IoT Private APN
Cell Modem
- AC Metering
- 3 way UPS
(AC, Solar, Battery)
- AC Power Supply
- AC Input connection
- DIN rail for expansion
(TIGO™ devices shown installed)



- 12 or 24VDC Battery Bank
- WAN Ethernet Switch (DHCP)
- LAN Ethernet Switch (We provide IP info)

SolarSCADA Integrated (SSI) Input module (61724-1)
 6x Back of Module Sensors
 3-wire RTD or Thermocouple
 2x 24-bit Analog Pyranometer inputs
 uV, mV, 1VDC, 5VDC, 10VDC, mA
 1x Weather Station SDI-12 input
 8x 12-24VDC Opto-Isolated Discrete In
 Incl. 2x KYZ pulse inputs
 3x 120 VAC Relay Outs
 2x Isolated RS-485 feedthroughs
 Full galvanic isolation for all field terminals

Field IO
 Cage Clamp Terminals for external RS-485

We're seeking the HeroX prize to upgrade our V03 Prototype Hardware (shown) to V04, and move from to a mass producible, lower cost implementation

SSI + 3 way UPS are in-house developed hardware devices specific to our product offering, built under contract by US-based manufacturing facilities.

SolarSCADA offers Unique, scalable turn key package easy to install and commission for C&I and distributed market. This includes:

- Full IEC 61724-1 Compliant Data
- AC power metering
- AC/DC/Solar standalone operation
- Private IoT SIM for data upload
- Access to our web portal
- Real Time data updates with high resolution historian (5-30 second polling standard, depending on device, poll times <100msec possible, stored in historian at deadbands determined by instrument accuracy specs)
- Inverter communications
- Secure VPN and forwarding for inverter remote access
- Custom time interval Web, CSV, Excel, and API data access standard
- Easy interface for Relaying and Protection Equipment
- Low Rate site image upload available as option

SolarSCADA has shipped ~50 projects in six states since our founding in 2018 totaling 37MW dc

Our Team



Greg, Carmelita, LaSheita

SolarSCADA Hardware:
 Install 1 panel per AC block up to ~ 10MW dc capacity per panel
 Large sites = copy'n'paste identical panels

Weather Station + Fixed Tilt Pyranometer Mounting

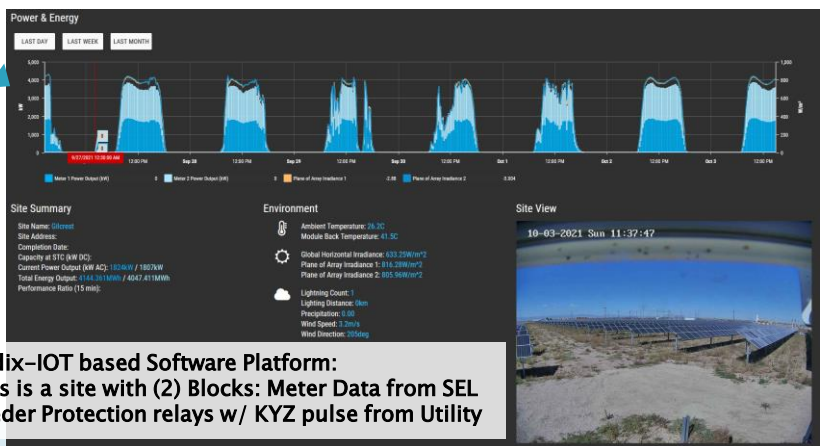


~500 real-time points / MW via our secure VPN
 Real Time on-site historian and data synchronization with fully autonomous solar standalone operation

Tracker-Mount POA / RPOA Pyranometer Bracket



Pre-Calibrated / Ready to install Module Temperature Sensors



Radix-IOT based Software Platform:
 This is a site with (2) Blocks: Meter Data from SEL
 Feeder Protection relays w/ KYZ pulse from Utility