



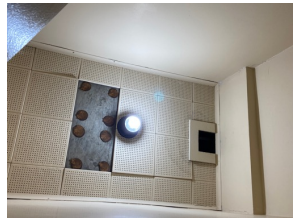
# Natchez-Adams School District

## Bulldogs go GREEN!



### OUR CHALLENGE

Natchez-Adams School District is the largest school system in the MissLou metro area. As a Tier 1 district in an economically disadvantaged area, we have seven 50/60-year-old buildings to maintain with a very limited budget. Our team is ready to meet the challenge to become **Energy Champions!** We aim to learn the skills and implement the changes needed to increase efficiency, reduce energy waste, and improve the air quality in our schools.



We plan to:

- Install LED Lighting to replace fluorescent lighting to increase efficiency
- Replace ineffective doors to improve air quality and reduce energy waste
- Remove asbestos ceiling & floor tiles to improve indoor air quality

### IMPACT!

Winning the Energy CLASS Prize would allow us to:

- Learn & Teach new ways to reduce energy costs
- Obtain training that we can share with 20 maintenance staff throughout the district
- Improve indoor air quality for 3000 students, 229 teachers, and 16 custodial staff members at 7 public schools



### PRIORITIZED LOCATIONS

- Gilmer McLaurin Elementary**
- Morgantown Elementary**
- Susie B. West Elementary**

### OUR CHAMPIONS

**Mrs. Aquetta Butler, Ed.S. - Accountability & Assessment Coordinator, NASD**

Team Captain in charge of coordinating training sessions

**Mr. Timothy Byrd - Business Manager, NASD**

Training Co-Captain, in charge of disseminating new information throughout the district, reporting and distributing funds for implementation of facility upgrades

**Mr. Robert Bradford - Emergency Management Director, Adams County**

Training Co-Captain, in charge of disseminating new information throughout the district