

# Southwest Vermont Supervisory Union

The Southwest Vermont Supervisory Union (SVSU) manages 10 buildings throughout its district. Due to the poverty levels within our local area and a moratorium on construction funding since 2008 in the state of Vermont, funding is restricted and facilities have been operating in a reactionary manner instead of being proactive to provide energy efficiency, savings, and healthy classrooms throughout the district.

## Facilities Focus

Mount Anthony Union High School,  
Arlington Memorial High School, & Molly Stark School



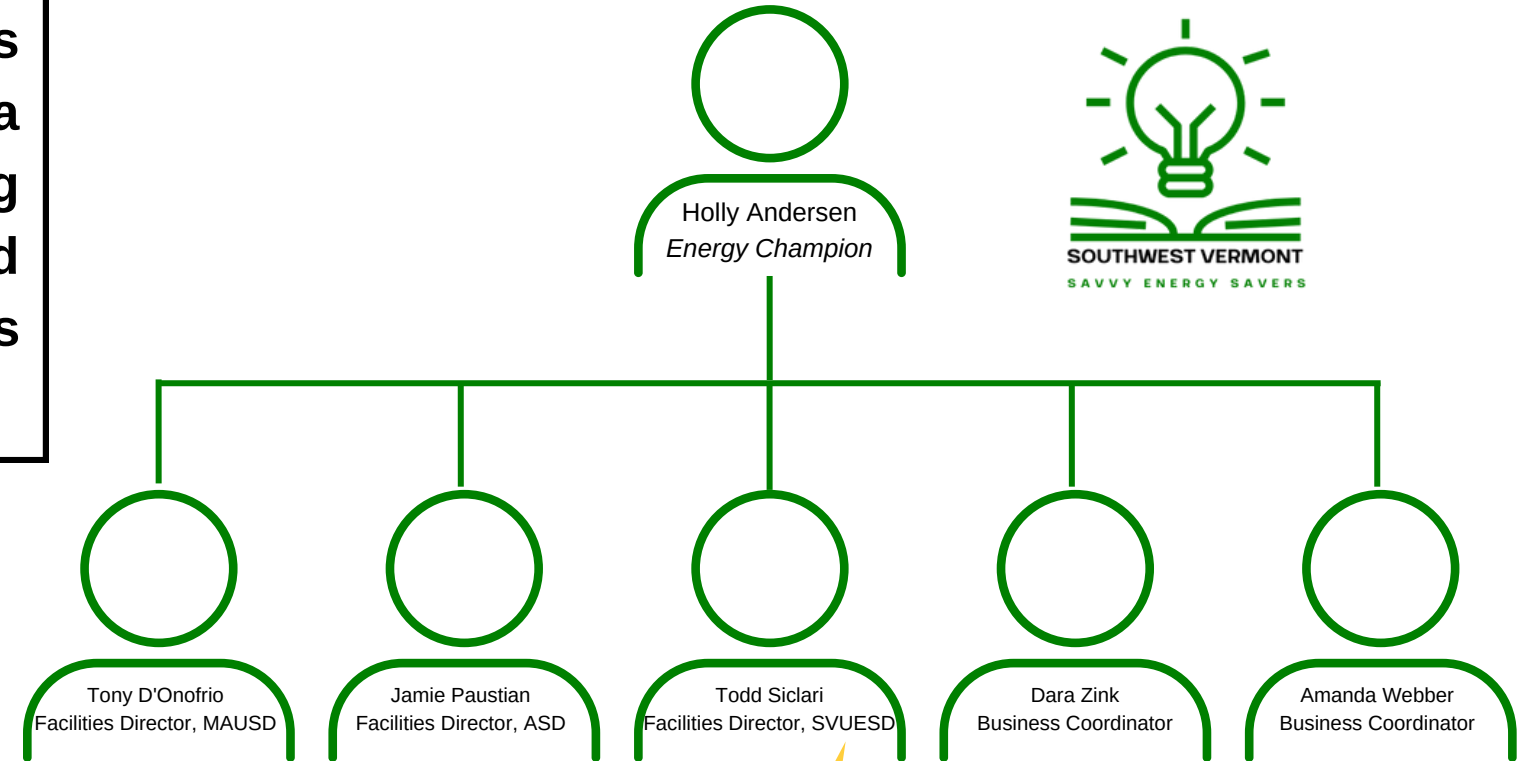
Entrance to Mount Anthony Union High School. This 1968 award winning building needs an energy assessment to facilitate future energy efficiency work.



Arlington Memorial High School, built in 1941, is a historic building but needs care in order to become energy efficient. It burned approximately 20,000 gallons of oil in 2022.



Molly Stark was built in 1958. Many of the doors are not sealed and you can see day light through them.



## IMPACT

We hope to show the community that energy efficiency and advanced technology that will integrate and help manage the facilities is beneficial to the students and staff and therefore garner their support on future projects. It has been found that learning environments that are healthy and safe, lead to better engagement from teachers and students. If we can start by addressing two of the five environmental areas that greatly impact a student's learning, air quality and temperature, this will create a positive environment for more focused learning. Poor indoor air quality is one of the leading causes of absenteeism for students with asthma. Inadequate air systems cause an increase in allergens, bacteria, and viruses that also lead to an increase in student illness and learning days lost. Maintaining an appropriate air temperature is also necessary for effective learning. Through this project we hope to evaluate and address the inconsistent temperatures throughout the buildings in order to provide a stable environment for our teachers, learners and community at large.