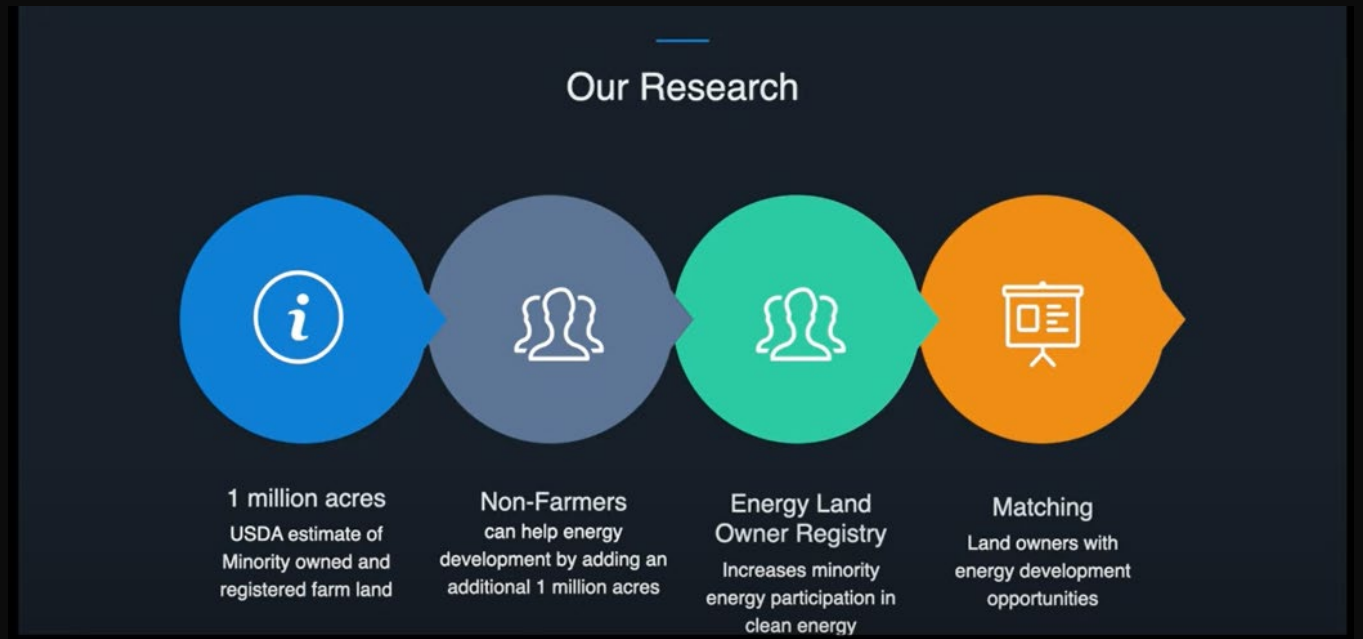


Midflare's Unique Approach to Delivering Community Solar

- The Midflare team has **over 70 years of development and relevant experience**
- Six Sigma-driven project implementations
- Our relentless focus on the details yields **superior community engagement**
- Our Research suggests there is +2MM acres of agricultural land owned by people of color, HBCUs and MSI
- Our goal is to identify 10% of this land for development (i.e., 200k acres) - 40 GWs of projects
- Utilizing industry standard market lease rates would **inject \$200MM/yr. into our targeted communities** and in excess of \$5B over the life of our projects



2 Million Acres
200,000 Acres
40 Giga Watts
200 Million Dollars
Over 25 Years
5 Billion Dollars