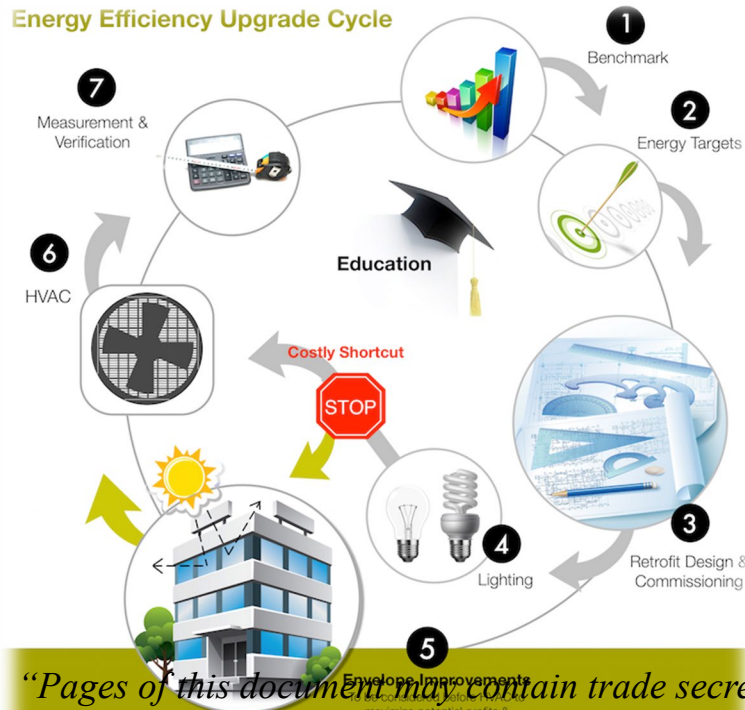
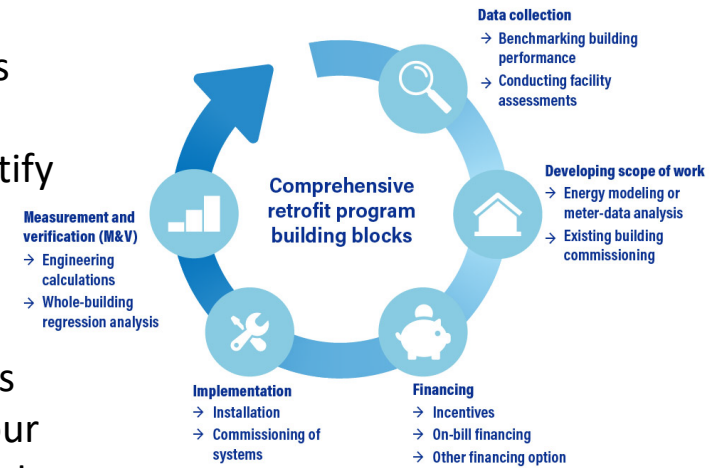


Welcome, Let us introduce to you some of our team and partners for this project. The owner of True Blue Consulting, LLC (TBC LLC) is Le'Quita Stone with extensive background in business consulting, Eternity McGinnis has extensive background in customer service, Partnerships for this project include but are not limited to Clean Earth & Energy LLC, 250 N. Main St, Muddy River Distillery, and True Blue Tribal LLC

The idea and concepts for the BuildingsUpgrade challenge aligns directly with our core mission and values while also running concurrent with our goals and services to assist individuals and businesses reduce overhead by becoming more energy efficient and using state of the art renewable energies without reinventing the wheel. We plan to start with an overall assessment of each location to identify the buildings energy waste and how to best provide energy efficiency for each location as well as identify what renewables could be used at each location.



We want to offer financing options to make the goals affordable while also providing a stable income for our companies growth. We have phased our initiative with our initial phase focusing on existing buildings or homes located in the mountains, piedmont, and coastal region of North Carolina with hopes to expand Nationally. Attached is 2 graphs that show strategies explaining how we plan to address each clients needs and assess each property individually. Each location of the properties we select will impact local and surrounding communities



True Blue Consulting LLC

*“Pages of this document may contain trade secrets or commercial or financial information that is privileged or confidential and is exempt from public disclosure. Such information shall be used or disclosed only for evaluation purposes or in accordance with a financial assistance or loan agreement between the submitter and the Government. The Government may use or disclose any information that is not appropriately marked or otherwise restricted, regardless of source.”*