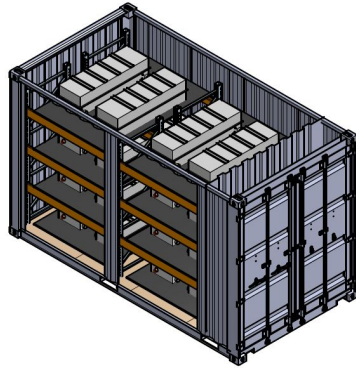


ReJoule Team, Second-Life Solar

Converting Hazardous Waste into an Integrated Solar Solution



We convert a rapidly growing waste stream, decommissioned electric vehicle batteries, into solar storage.



At our pilot site, the California Botanic Garden, the used batteries from just eight electric vehicles (left) and the power of solar will safeguard the nation's largest collection of California native seeds (right)

Our suite of solutions

- A battery enclosure developed with guidance from Pacific Northwest National laboratory.
- Robust hardware integrating used electric vehicle battery control electronics with commercial solar inverters.
- A device to rapidly grade batteries in less than 10 minutes, as compared with over 10 hours using traditional methods.

Partnerships built during this contest

- Redwood Energy helped us sell a \$4.9 million solar storage system
- CollectiveSun committed to securing \$5.2 in private investments
- Pacific Northwest National Laboratory helped us with fire safety planning and is validating our rapid battery grading tool.
- Native Sun Community Power Development is leading outreach in tribal lands.
- VentureWell is helping us sharpen our business model and storytelling
- Neighborhood Housing Services of South Florida is advising us on JEDI strategies.

