

# 100% SOLAR OFF-GRID LIVING

DESIGNED FOR COMPLETELY SUSTAINABLE SOLAR ELECTRIFICATION

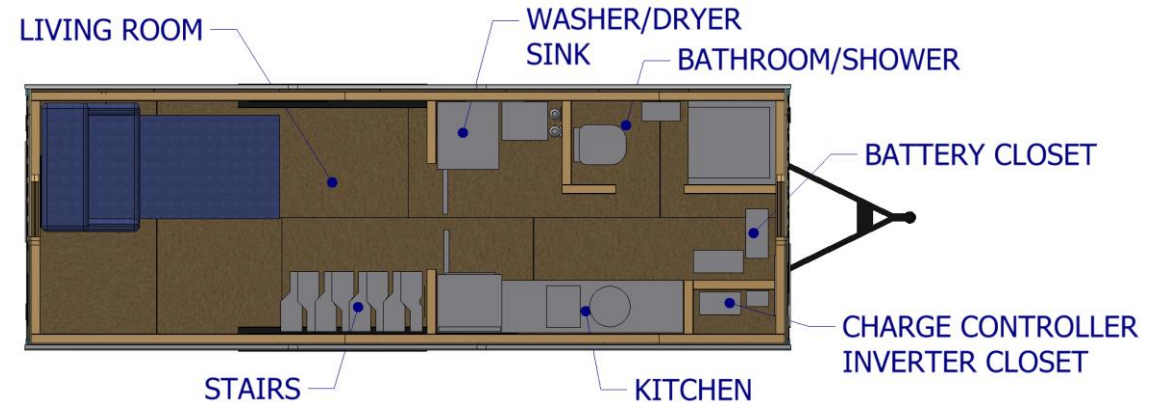
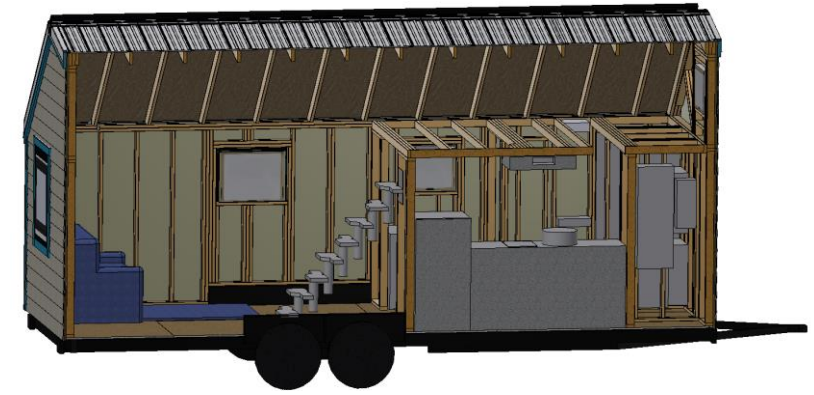


## Solarcycle Tiny Home Specs:

- \* Days Powered Without Sun: 1 Day @ Max Load | 5 Days @ Min Load
- \* Typical Recharge Time From Empty to Full: 3 Days of Full Sun
- \* 24 Foot Trailer
- \* 7 X 410 Watt Solar Panels | 2872 Max Watts Total
- \* Can Produce 545 Watts even on a cloudy day
- \* 44kWh Battery Rack @ 48 Volts
- \* Max Continuous Load : 15kW @ 120VAC
- \* Average Hours of Sun Per Day Required for Max Load: 4.6 hours
- \* RV Water Connection and 8 Gal Point-of-Use Water Heater
- \* Inductive Stove Top with Range Hood and 4-in-1 microwave/oven
- \* Sleeping Loft
- \* 32" Shower and Choice of Toilet Style
- \* Generator/Grid Tie Input: Standard 50 Amp Connection
- \* Power Output: Standard 50 Amp Socket



**"Plug into Independent Power."  
When the power grid goes  
down unexpectedly, stay  
powered and connected! Bring  
the power of the sun directly to  
your house!**



## Solar Charge/Battery Storage System

100% Off-Grid Solar Power is achieved by combining the latest energy efficient products on the market and balancing power loads!

- \* CONFIGURABLE - Models available with or without solar and battery rack. External solar panels with micro-inverters can be connected to the Generator 50A Input and can be mounted on top of decking if a ground mount isn't available.
- \* SAFE - LiFePO4 batteries are used, which is the safest Lithium battery chemistry available. Fire resistant Rockwool insulation.
- \* DURABLE - The Solarcycle tiny home is designed for 100% full-time permanent off-grid living and will handle most weather conditions.