

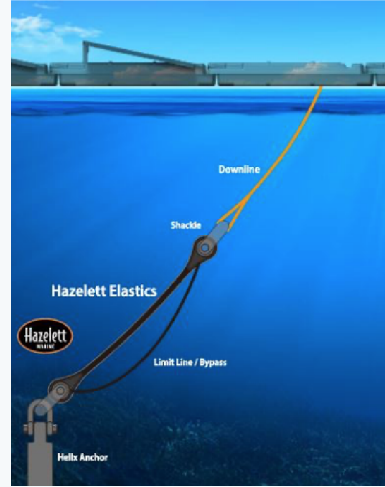


TOTORA

FPV



Anchoring & Mooring: Totoro offers a customizable anchoring system using Hazelett Elastics, allowing for depth variation and long term stability.



Elastics absorb dynamic energy from wind, waves, and currents to reduce point loads and provides the stretch to make up for depth variation.



The downline connects to the elastic and is sized based upon the water depth at its lowest point when the water is at its calmest.



Helix or screw anchors provide the least impactful and most precise manner to anchor an array.

The Totoro FPV product was created to advance floating solar by providing the **most efficient, quality, and turnkey floating solar products and solutions available.** Totoro offers a modular floating solar product that includes a stable, efficient, all in one turnkey product ready for installation.

Floating System



Easy installation



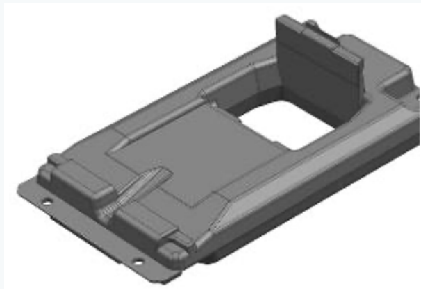
High Stability



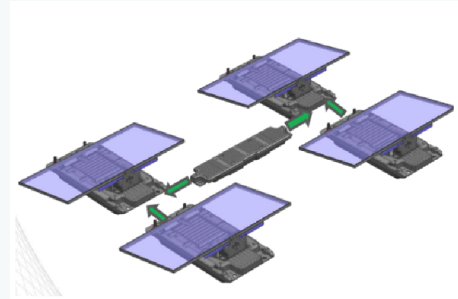
Wind tested to 60 M/S



Long lasting durability



The Totoro FPV float is a simple, durable, modular design that is responsible for holding the racking of the solar panels and is where the solar array attaches to the mooring line.



Totoro FPV utilizes multiple types of floats from Kyoraku's product line. Floats are set to hold solar panels at optimal positions for performance, and panels are held stable with a four retainer design.



Passage floats allow access to the arrays without walking on the module floats and are used to run large cables from inverters to array blocks. Secondary floats are used to buffer the array.



LOW MAINTENANCE

Uniform floats that are easy to work with. Elastic moorings with few metal-to-metal connection points.



ENERGY ABSORPTION

Elasticity of moorings absorbs wave & wind energy, reducing wear on the float system and increasing stability



POINT LOAD REDUCTION

Ease of walking on the system. Power cables stay put and are not jostled around in adverse weather.