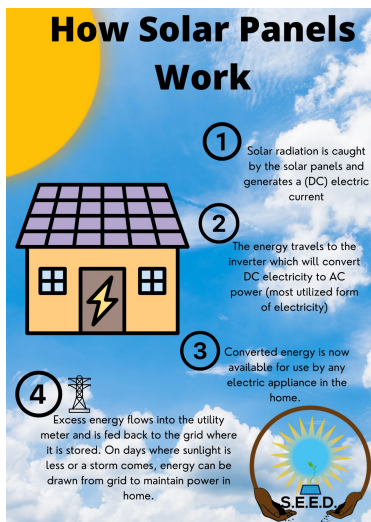


S.E.E.D. (Solar Energy Equity Deployment) 2.0: Living Solar Classroom



SEED Mission

To educate, engage, & empower Tallahassee residents in Low-to-Moderate Income (LMI) neighborhoods with solar power and deep energy retrofits, reducing the energy burden and inequity.

Project Description

To create a living solar classroom for communities, incorporating schools and community centers, creating workforce development programs for 16- to 24-year-olds and programs for returning citizens, and as well as building a mobile unit(s) that can be used to travel from community to community.

Project Partners

ReThink Energy Florida, Inc, The City of Tallahassee, Greater Frenchtown Revitalization Council, Greater Bond Neighborhood Association, Tally 100%, Tallahassee Food Network, Citizens for a Sustainable Future

Project Leadership

- Te'Rel Bowman, Project Manager for SEED, has been on the ground making this project a reality for 2 years.
- Hiring from within the neighborhoods served, equity is built into its leadership.
- Supported by trusted neighborhood elders like Mrs. Talethia Edwards.