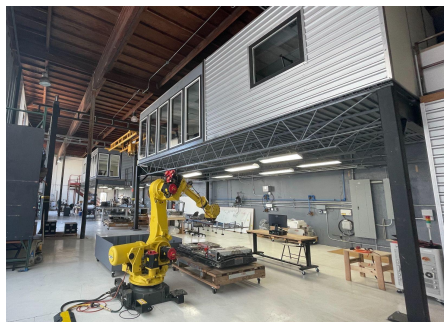


Repurposing 2nd Life EV Batteries For Long Duration Energy Storage



Power: 500kW
Voltage: 480V
 3P4W
Safety: Built-in fire suppression

100 - 200 GWh of EV batteries retired by 2030

Posh Electric HQ
 SOH, Disassembly, Re-manufacture

LDES 1MWh container with 2nd life batteries



Wesley Zheng: CEO
 Former co-founder of Volansi (\$75M raised)
 Stanford, PhD



Chung Hoang: CTO
 Former Director of Avionics at Volansi
 NTU, Singapore



Bobbie Munoz
 Former Director at EnerPort
 Hewlett Packard Enterprise



James White: Advisor
 4X founder
 Division president at Bruker



Massachusetts Institute of Technology



TOYOTA RESEARCH INSTITUTE



Agency for Science, Technology and Research



Posh Electric (POSH) will re-purpose second-life EV lithium iron phosphate batteries to manufacture 1 MWh containerized, modular battery energy storage systems (BESS) for long-duration energy storage, suitable for both demand management and power backup applications.