

ReHome

A Tool for Circular Post-Disaster Waste Management and Housing Supply Chains

Current Linear Post-Disaster Supply Chains

Natural disasters, like the 2023 tornado in Sullivan, Indiana, create massive destruction and tons of waste. Traditionally, this waste is dumped in landfills, while homes are rebuilt with all-new materials.



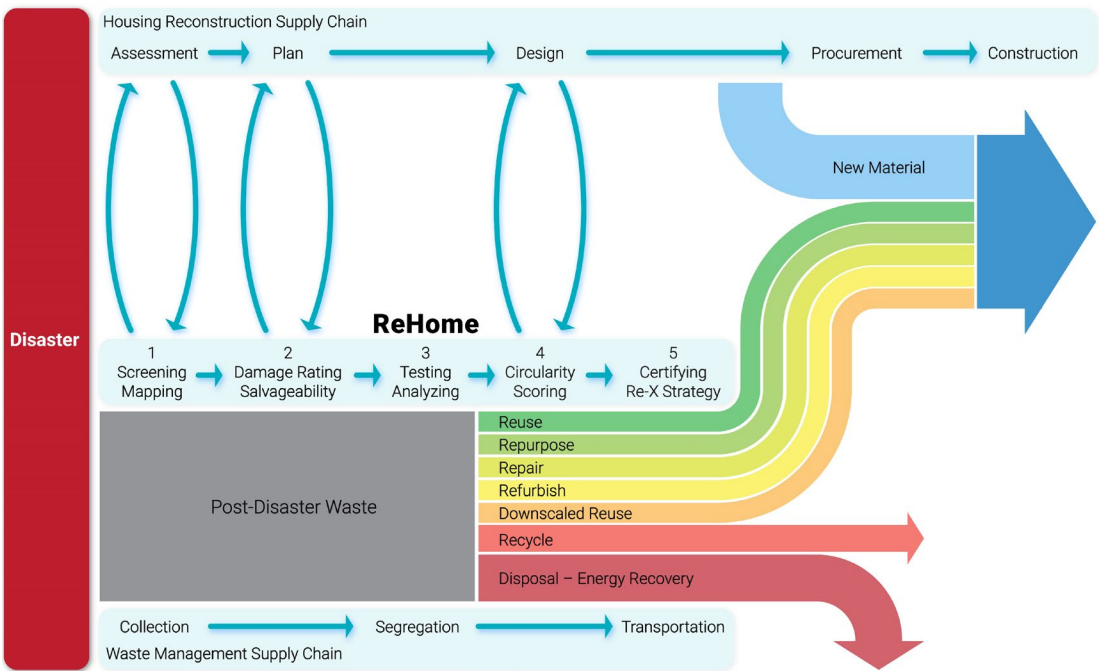
Sullivan after tornado (2023) Image by REUTERS.



Sullivan post-disaster waste was dumped in a new landfill site.

Circular Post-Disaster Supply Chains Empowered by ReHome

ReHome unlocks opportunities for reusing and repurposing post-disaster waste, transforming it into an immediate bank of materials and untapped resources for rebuilding homes. Through a six-stage process, ReHome will enable a swift, cost-efficient, and environmentally low-impact approach to post-disaster waste management, housing reconstruction, and community recovery.



ReHome Outcomes and Broader Impacts



Increased salvageability and re-utilization of waste and reduce the usage of new material



Reduced carbon and energy intensity of post-disaster waste management and housing



Reduced the cost of waste disposal and housing reconstruction and



Emerging circular economy – new businesses, jobs, and revenue

ReHome Team



Mojtaba Parsaee, PhD
Innovator, Leader & Local PI



Wes Bedwell, MBA
Co-Leader & Local PI



Naomi Keena, PhD
Consultant



Soroush Abolhassani, PhD
Consultant



Tarlan Abazari,
Ph.D. Candidate