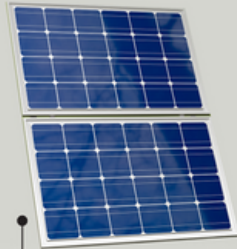


HOW THE SYSTEM WORKS

Optimization and delivery of green power in off-grid communities with cloud connected electronic switch technology.



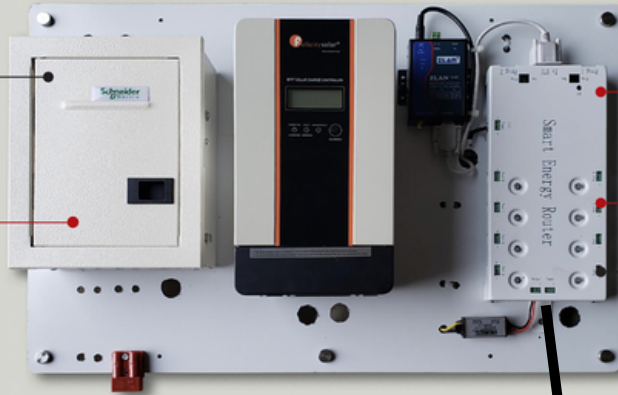
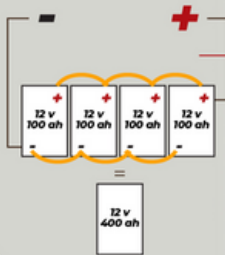
io nanogrid



POWER PANEL

The power configuration, which plugs into the power panel, consists of:

- A) (2) 545-watt PV Panels
- B) (4) 12-volt, 100 Ah Gel batteries



4G Network connection to cloud for remote access and control of all circuits.

(8) electronic switches (see next page for details) powers up to (8) homes

4G Network Outlet
Each home receives 48 VDC from Smart Energy Router. Outputs 12 VDC for TV/Frig/Lights and USB ports.



All of the loads plug into the 4G network outlet



12 Volt Direct Current Loads

	Power Usage, Wattage	Quantity	Total
Refrigerator. 118 Liter	85	1	85
Outdoor Light	30	1	30
Indoor Strip Light	9	2	18
Round Ceiling Light	18	1	18
Indoor Table Lamp	15	1	15
32" Television	38	1	38
Free Standing Fan	23	1	23

Total Maximum wattage per home... 227

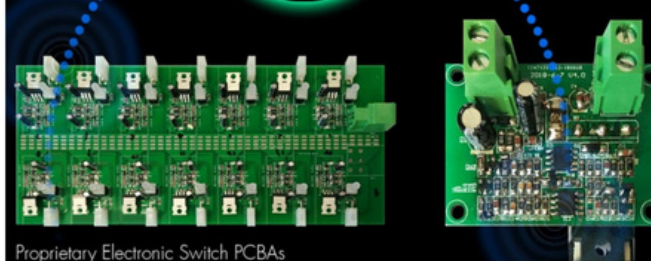
Electronic Switch Technology

Reacts in microseconds, one millionth (0.000001) of a second.

- Limits inrush current
- Eliminates arcing
- Limits short circuit current



Speed and Safety of Electronic Switch Technology allow the creation of DC power equipment that wasn't possible before



Proprietary Electronic Switch PCBAs

WiFi enabled communications for monitoring and recording energy usage and energy quality data