

*GRANITE SCHOOL  
DISTRICT  
SALT LAKE CITY  
MOVING FORWARD TO  
REDUCE CARBON  
FOOTPRINT*



# AGENDA



Utilize Granite School District's win of \$100,000 Energy Class Prize to further their commitment to environmental sustainability



Employ New Buildings Institute / U.S. Dept. of Energy training strategies to find resources and opportunities to reduce carbon footprint



Identify energy suppliers most viable to partner with, develop and implement a sustainable program



Identify Stakeholders, gain approval and participation to implement energy efficient programs



Work with Stakeholders and selected energy suppliers to identify and prioritize methods, programs, and facilities that would best serve our energy goal

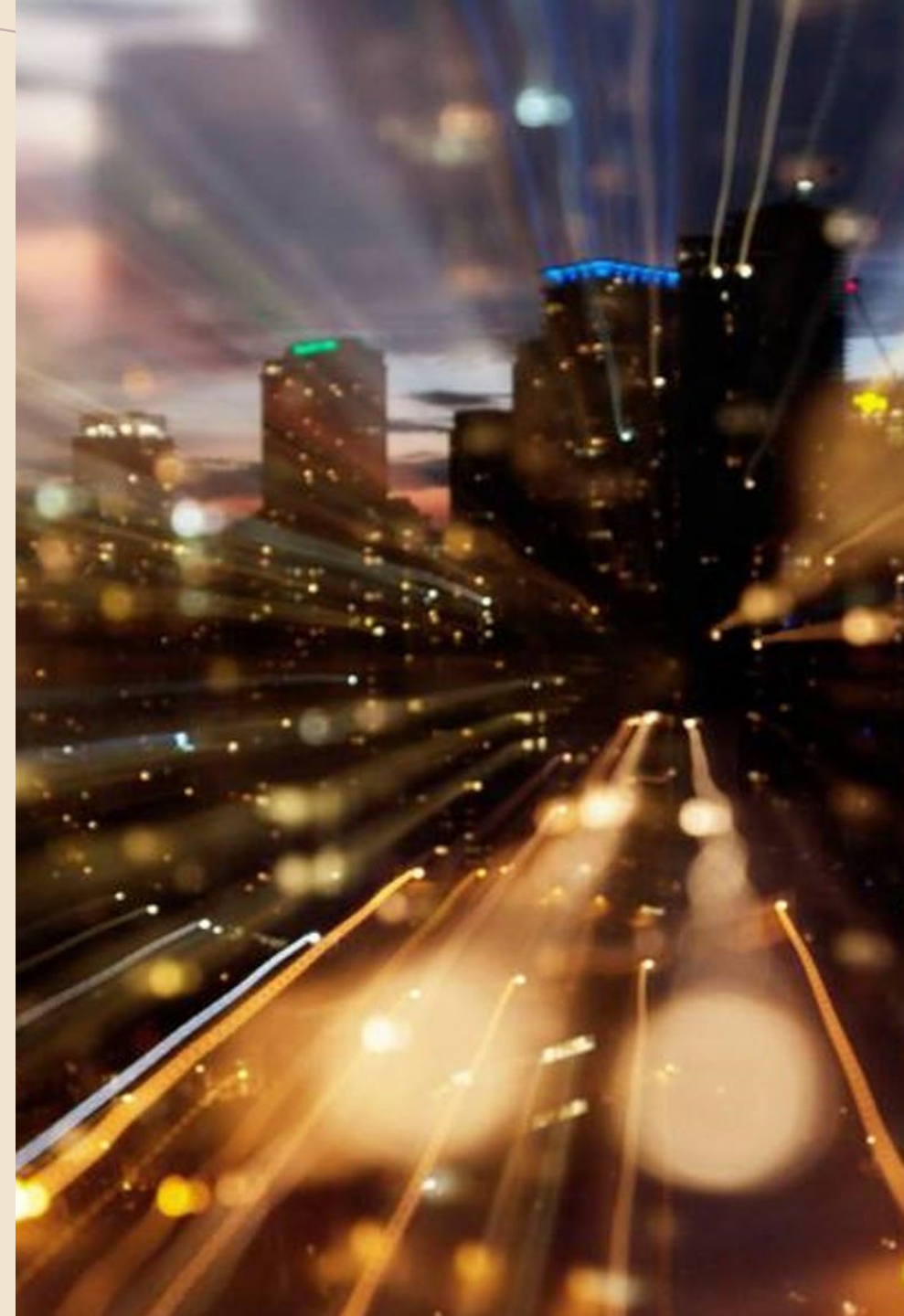


Continue to source partners, staff, students, community, and develop programs to obtain a clean energy infrastructure

- New Buildings Institute, Coalition for Climate Education Policy and Undaunted K12 study found school buildings across Utah produce 889,788 metric tons of carbon dioxide emissions. When measured per million square feet of annual emissions, the figure ranked eighth-highest in the country.

# *MOVING FORWARD*

- After discussions with local municipalities, the GSD Energy Team deems Rocky Mountain Power (RMP) for possible partnership based on their similar long and short-term goals for reducing carbon footprint
- With Stakeholder's approval, RMP reviews facilities and systems of three Granite pre-identified schools that would benefit most from an energy program
- RMP and GSD have a long-term healthy relationship. RMP proposes a mutual partnership to share a \$87 million dollar grant that they are applying for
- After buildings evaluations, RMP a trial project to convert Magna Elementary to a solar battery facility
- Granite has applied for the Blue Sky Grant through RMP and is applying the \$100K toward the Magna School solar battery project
- Both the District and Rocky Mountain Power are optimistic over the trial project and what they can achieve to reducing Salt Lakes' carbon footprint





*THANK YOU*

Troy Chilton

385-646-4233

[tpchilton@graniteschools.org](mailto:tpchilton@graniteschools.org)