

Team INTUS Windows Secondary Glazing System Submission

Our cost-effective and highly energy efficient solution will provide the optimal path forward for buildings across America. This will provide a highly thermally efficient secondary system to maximize performance and minimize energy costs, as well as providing an economical installation.

Like Passive House applications, this option will provide higher-levels of insulation, the minimalization of thermal bridging, and high-performance windows, thus reducing the energy needs and demands of the building. This will reduce both environmental impact and energy costs.

This performance will be achieved through the use of warm-edge, low-conductivity spacer bars within high-performing IGUs, set in a high-performance polymer framing system.

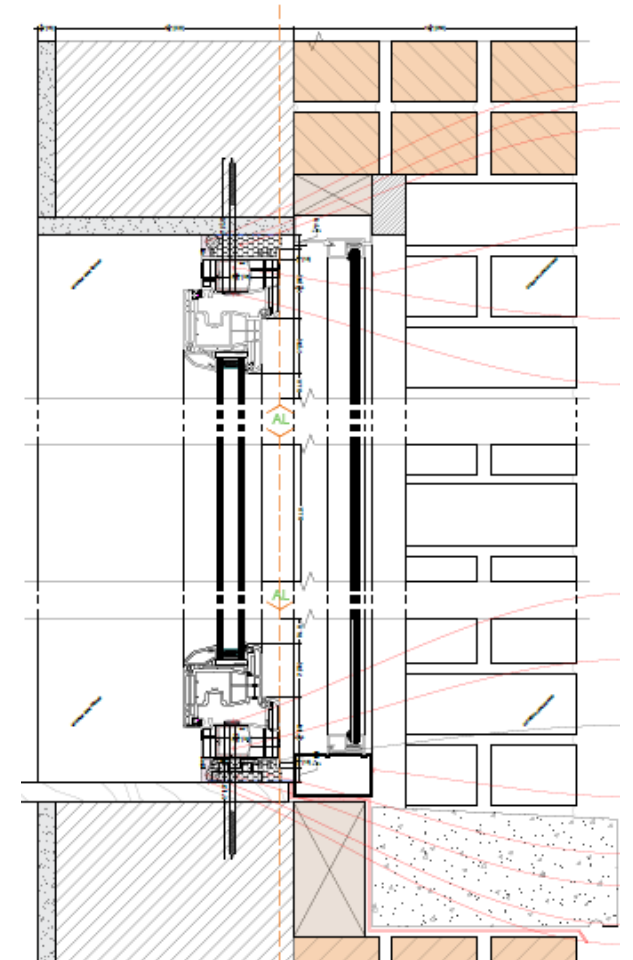


TABLE 1 - US DOE Building Envelope Innovation WINDOW ASSEMBLY thermal performance

	Units	RESULTS
U-value (Imp.)	Btu/hr-ft ² -F	0.19
U-Value (SI)	W/m ² -K	1.07
R (Imp.)	hr-ft ² -F/Btu	5.29
SHGC	-	0.27
VT	-	0.43