

The Problem: Parking lots represent a significant untapped opportunity, yet current solar carport solutions are too complex and costly to scale



Troy Tyler, troy@gridwave.co

Our Solution:

a modular, pre-engineered, pre-built carport for commercial solar and EV charging

Benefits:

SAFETY & QUALITY:

- Safer install for field workers
- Greater quality assurance in factory

CONTROL:

installers can price, design, build themselves

SAVINGS:

- \$0.20/W reduced installed cost
- improves margin \$/labor hour



U.S. DEPARTMENT OF ENERGY

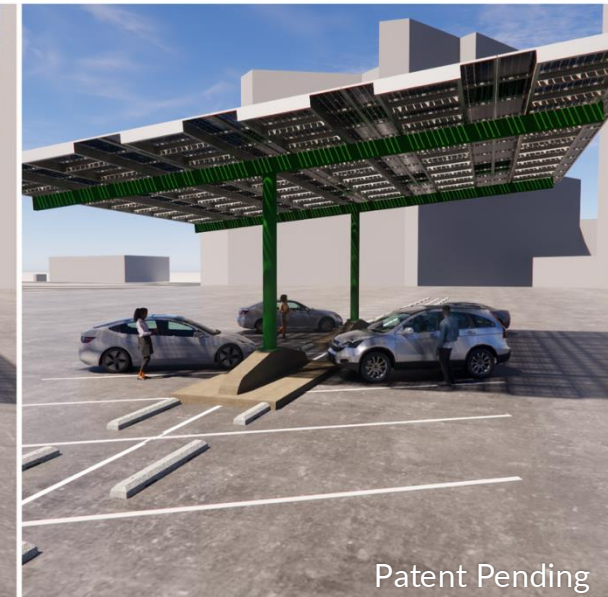
How It Works:

Wave platform¹ combines

- 1 Precast concrete & steel towers
- 2 Factory-assembled wings of PV modules
- 3 Integrated lighting, inverters, EV chargers



Wave 22 (22.5kW) covering 5 spaces



Wave 45 (45kW) covering 10 spaces

Patent Pending

¹ Preproduction pilot design. Final product designs and options may vary