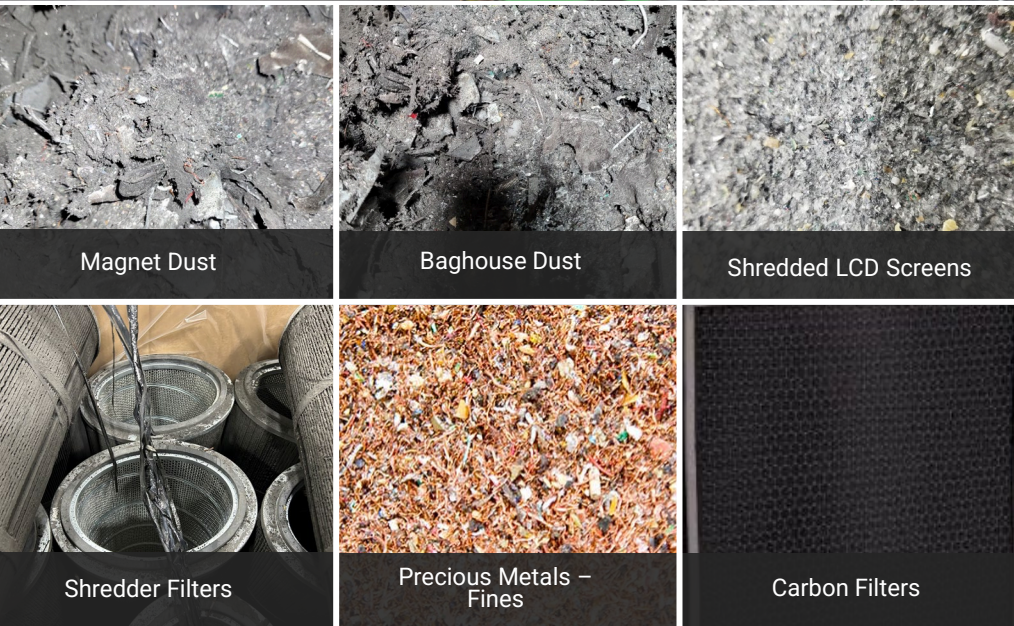


Analyzing Waste Streams



Analyzing Electronic Recycling Waste Streams for Potential Rare Earth Element Recovery



- Rare Earth Elements (REEs) found in wide range of e-waste, including
 - Smart Phones
 - LED Lighting
 - Flat Screen Displays
 - Cameras
 - Hard Drives
 - Speakers
 - CD/DVD Drives
- Rare Earth Element Recovery is currently limited by the fact that these elements are in low supply and located in difficult to extract processes. The cost of separation prior to processing is very difficult.
- ERI would like to evaluate our shred waste streams to determine concentrations of various REEs that are likely to be captured there as a byproduct of our shredding process. Once armed with this data, ERI can move forward with valuable pilots on the recovery of these materials without impacting higher volume and higher value commodity recoveries.

