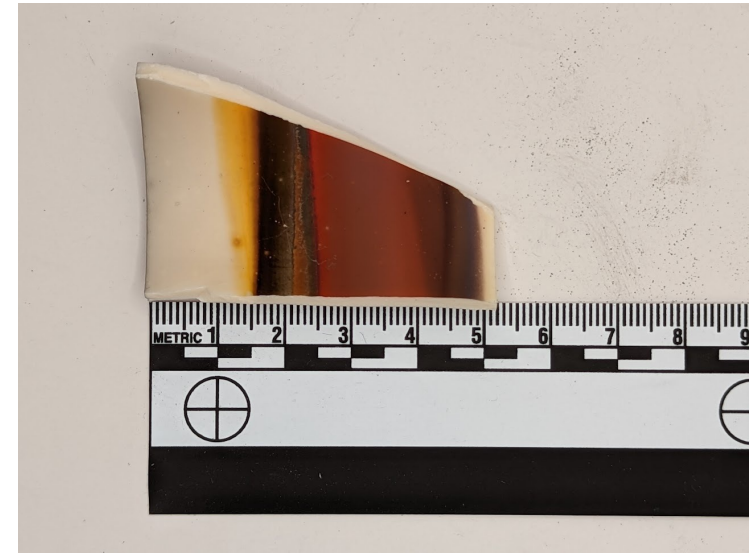
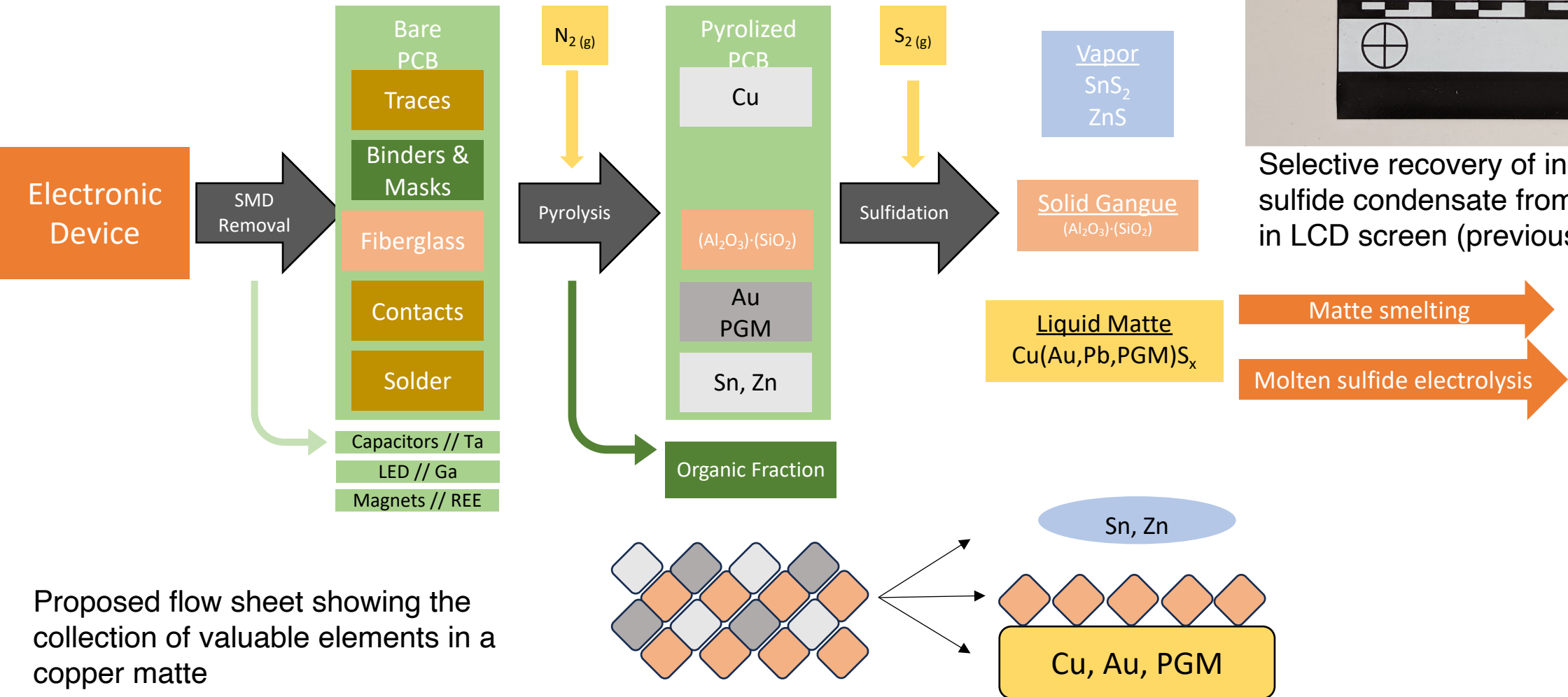


# Pyrolysis and sulfidation for PCB metal recovery

The Allanore research group: Charles Boury, Ethan Benderly-Kremen, Katie Daehn and Antoine Allanore



Selective recovery of indium and tin sulfide condensate from ITO glass in LCD screen (previous work)

Proposed flow sheet showing the collection of valuable elements in a copper matte