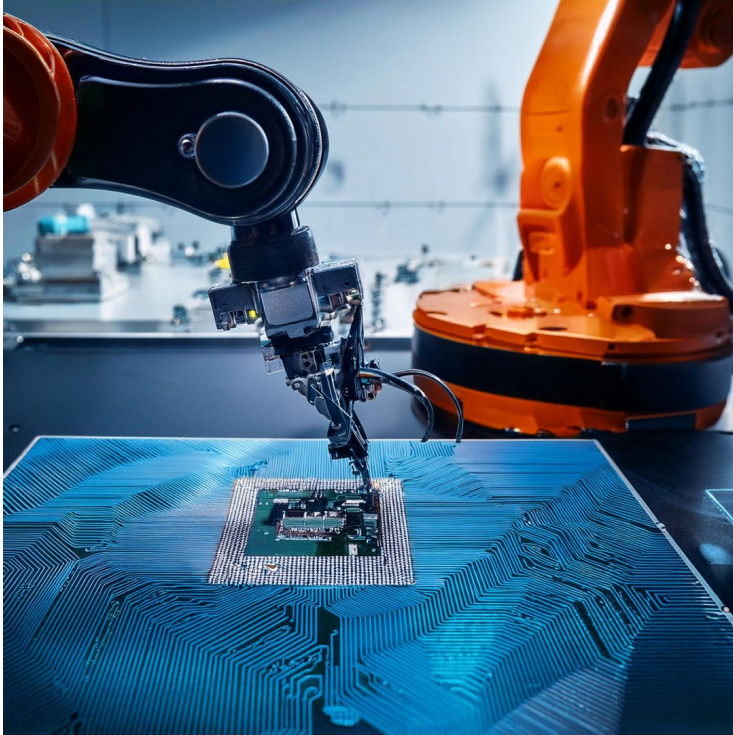


Magic PCB Separator



- Innovative recycling system that leverages AI and robotics for efficient e-scrap material recovery
- Recursively decides the next best step as it breaks down a PCB into increasingly small pieces
- Optimizes economic value and sustainability by producing both reusable components and raw recycled materials
- Team from MIT with deep expertise and ecosystem ties in the electronics, recycling, and tech deployment sectors
- Roadmap includes benchtop demonstrations, pilot-scale testing, and first-of-a-kind system deployment
- Advances environmental sustainability and economic viability in e-scrap recycling industry