

SolarConcentrate

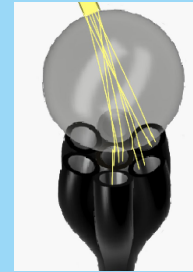
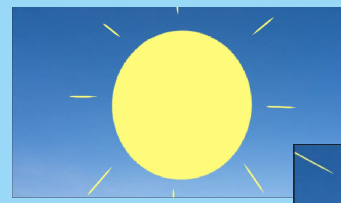
Maximum Light Collection with Minimal Solar Cells

Problem:

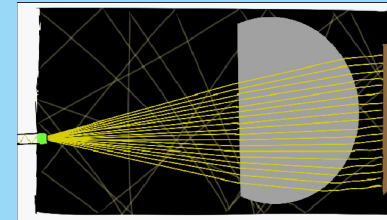
The residential solar industry is currently wasting the vast majority of the conversion potential of solar cells. Over 99% percent is wasted because the brightest sunlight is only 1/1000th what a cell is capable of converting to electricity. Even in the best conditions the sun simply doesn't shine bright enough to saturate the cells directly.

Solution:

Extreme solar concentration through solar tiles, and fiber optics.
Efficient conversion in a single, small, photovoltaic solar panel.



Motion Free Tracking Element



Conversion Appliance with photovoltaic cells and collimating optics



Dan Marsch



Skylar Garrett

Connector:
POSITIVE
DE√IANCY



Fiber Optic
Concentration Network