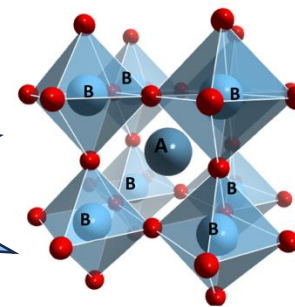


pinwheel solar

A Thin Film Perovskite Solar Cell Technology

Why our technology?

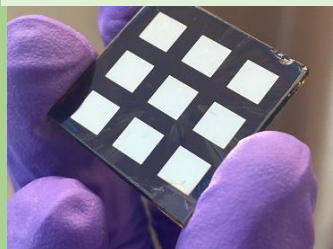


ABX_3

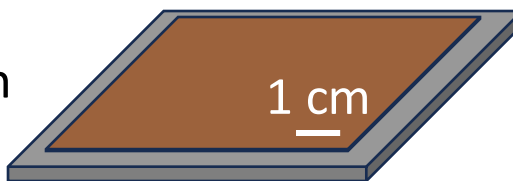
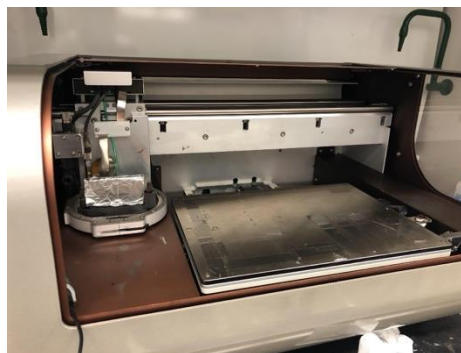
- Long-term Stability
- Low-cost

Ready

Efficient and Stable Solar Cells

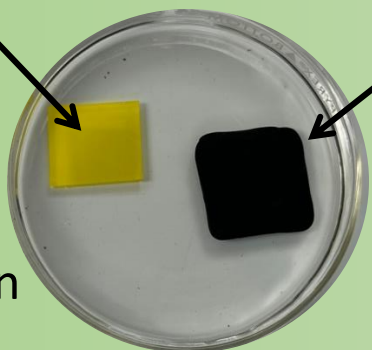


Scaling up

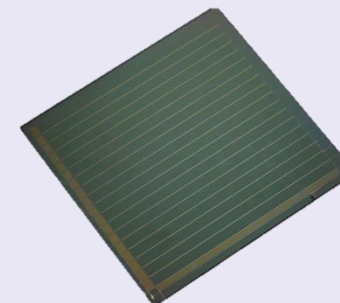


Unique encapsulant leads no degradation

Water submersion



Set



Prototype module

nimbus

Customer

Go

- Third party Validation
- Initiate panel manufacturing with potential partners

