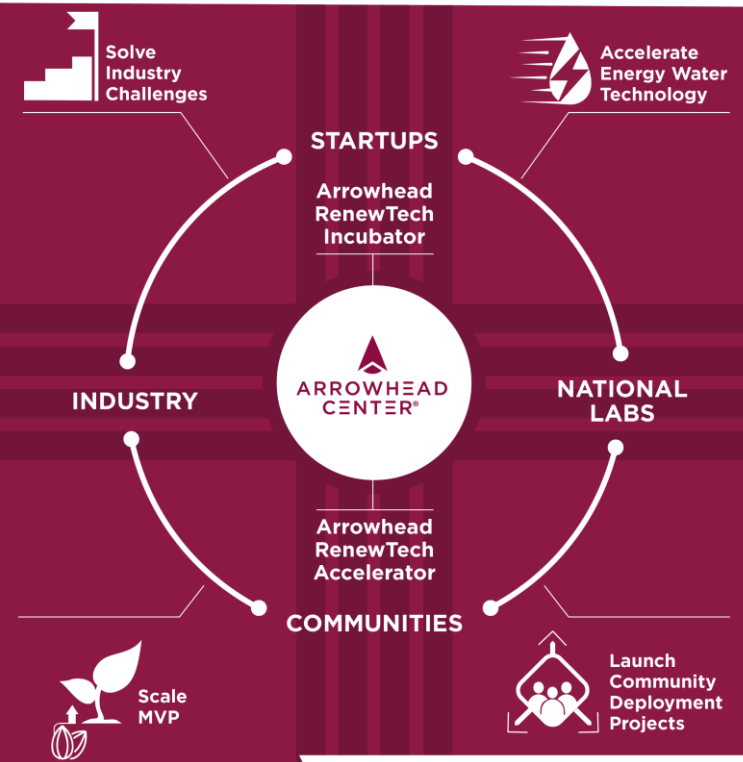


Arrowhead RenewTech Incubator & Accelerator

Accelerating cutting-edge energy-water technologies to bridge disparities and provide underserved communities with equitable access to sustainable solutions

Leading innovation and economic development in NM, Arrowhead Center at New Mexico State University (NMSU) accelerates innovation and startup growth. Home of the NM Clean Energy Resilience and Growth (CERG) cluster, Arrowhead has over 20 years of experience driving impactful commercialization efforts, fostering regional partnerships and addressing critical challenges. Arrowhead prioritizes Diversity, Equity, Inclusion, and Accessibility (DEIA), empowering underserved and rural communities through scalable solutions that advance sustainability and equitable economic opportunities.



MVP Pivot: Partnership and Engagement Model

The MVP pivoted from the incubator and accelerator to a **collaborative engagement model**, recognizing that deep community and stakeholder involvement is key to addressing real-world energy-water challenges and disparities in underserved populations. This DEIA-focused engagement model is critical, fostering cross-sector collaboration to ensure that solutions are innovative, equitable and aligned with the needs of marginalized communities, driving more effective commercialization and real-world impact.

Project Description:

The Arrowhead RenewTech Incubator and Accelerator, led by Arrowhead Center at NMSU, accelerates the commercialization of cutting-edge energy and water technologies with a strong focus on DEIA. The program prioritizes underserved and rural communities by fostering cross-sector collaboration among startups, national laboratories, industry and local stakeholders. Leveraging key assets like the NM Clean Energy Resilience and Growth (CERG) cluster and Sandia National Labs, the project will deliver scalable solutions to address critical energy-water challenges, promoting sustainable and equitable growth.

Phase II Implementation Progress Highlights:

- ✓ Finalized design of incubator & accelerator
- ✓ Secured partnerships with communities, national labs and industry partners
- ✓ Community Commitments: Taos, Roswell, Questa and Los Lunas
- ✓ Laid groundwork for community pilot projects
- ✓ Programming launch-ready