

TEAM ENERGIZING SOUTHEAST ALASKA PRESENTS

# PRINCE OF WALES INTEGRATED FOREST ENERGY CAMPUS

## COMMUNITY ENGAGEMENT:

**16+** ONE-ON-ONE MEETINGS

**24+** STAKEHOLDERS IDENTIFIED  
12 Cities, 4 Tribes, 8 sawmills, 5,650 residents, & the population of local wildlife

**18** PRIORITIES DISCUSSED

**8** PRESENTATIONS TO GROUPS

**2** IN-PERSON GROUP MEETINGS

**2** PROMOTIONS THROUGH SEC NEWSLETTERS,  
WEBSITE & SOCIAL MEDIA

## COMMUNITY PRIORITY:

ESTABLISH AVAILABLE, ACCESSIBLE, AFFORDABLE, CONSISTENT, RELIABLE, SUFFICIENT, SUSTAINABLE SUPPLY OF ENERGY PRODUCTS. WOOD IS THE BEST FORM OF HEAT.

## CLEAN ENERGY PROJECT SOLUTION

CREATE A COOPERATIVE BASED INTEGRATED FOREST ENERGY CAMPUS ON PRINCE OF WALES ISLAND, DEDICATED TO FOSTERING ENTREPRENEURSHIP, PROVIDING ECONOMIC STIMULATION, EDUCATION AND AN ALTERNATIVE ENERGY SOURCE FOR LOCAL BUILDINGS BY UTILIZING WOOD WASTE FROM LOCAL SAWMILLS TO PRODUCE BIOMASS PRODUCTS LIKE BIOBRICKS, PUCKS, AND FIRE LOGS, OFFERING SIGNIFICANT ENERGY AND DECARBONIZATION BENEFITS TO MEET THE LOCAL SPACE HEATING ENERGY CHALLENGE

WITH PARTNERSHIP FROM: City of Thorne Bay, AK

Launch Alaska

City of Craig, AK

Alaska Climate Tech Hub

Nature Conservancy

Mule Deer Foundation

Prince of Wales Chamber of Commerce

Equitably working with the community of Thorne Bay, Alaska to find a renewable and sustainable alternative energy solution for building heat to reduce the community's impact on global climate change as well as to improve the economic opportunities and quality of life in Thorne Bay through the creation of local, good paying jobs, rejuvenation of the forest industry and reduction in the cost of living.

## TEAM OF EXCELLENCE



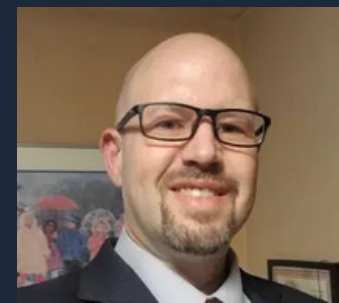
ROBERT VENABLES  
EXECUTIVE DIRECTOR



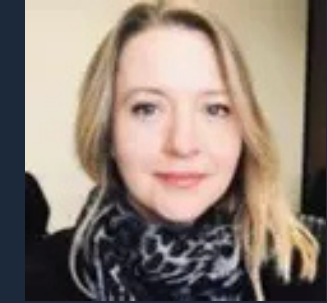
KAITLYN JARED  
SPECIAL PROJECTS MANAGER



KAREN PETERSEN  
BIOMASS COORDINATOR



CHARLES WESTMORELAND  
ENERGY COORDINATOR



CADY LISTER  
SENIOR ENERGY ADVISOR



ANGIE MENDBAYAR  
BIOMASS STAFF

Collectively over 90 years of experience in public engagement and alternative energy advocacy work.

