

# Solar Clamp

A modular and non-invasive PV mounting system for windows and parapet walls.

- ⚙ As easy to install as a typical air conditioner
- ⚙ Designed for urban areas with limited space
- ⚙ Adjustable for a range of installations
- ⚙ Building code compliant
- ⚙ Supports 50 - 200 watt modules
- ⚙ Easily pairs with off-grid PV kits

**Team:** Alex Nathanson, Project Lead; Pratik Jain, Product Designer; Mitchell Dose, Fabricator

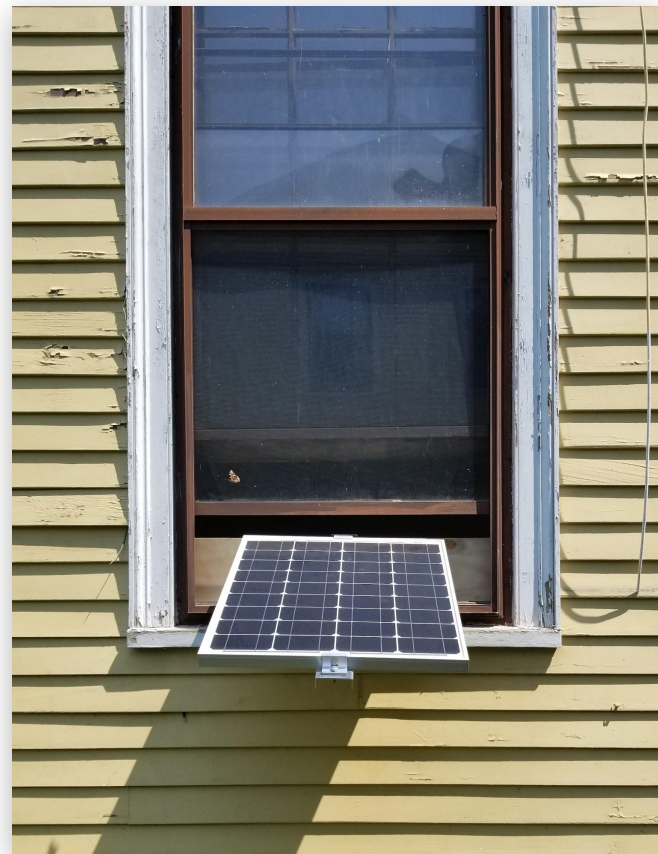


Image: An early prototype of the Solar Clamp with a 50 watt PV module.