

WIREWALKER™

WAVE-POWERED PROFILER

Ocean wave energy for high-bandwidth ocean monitoring

LIVEWIRE™

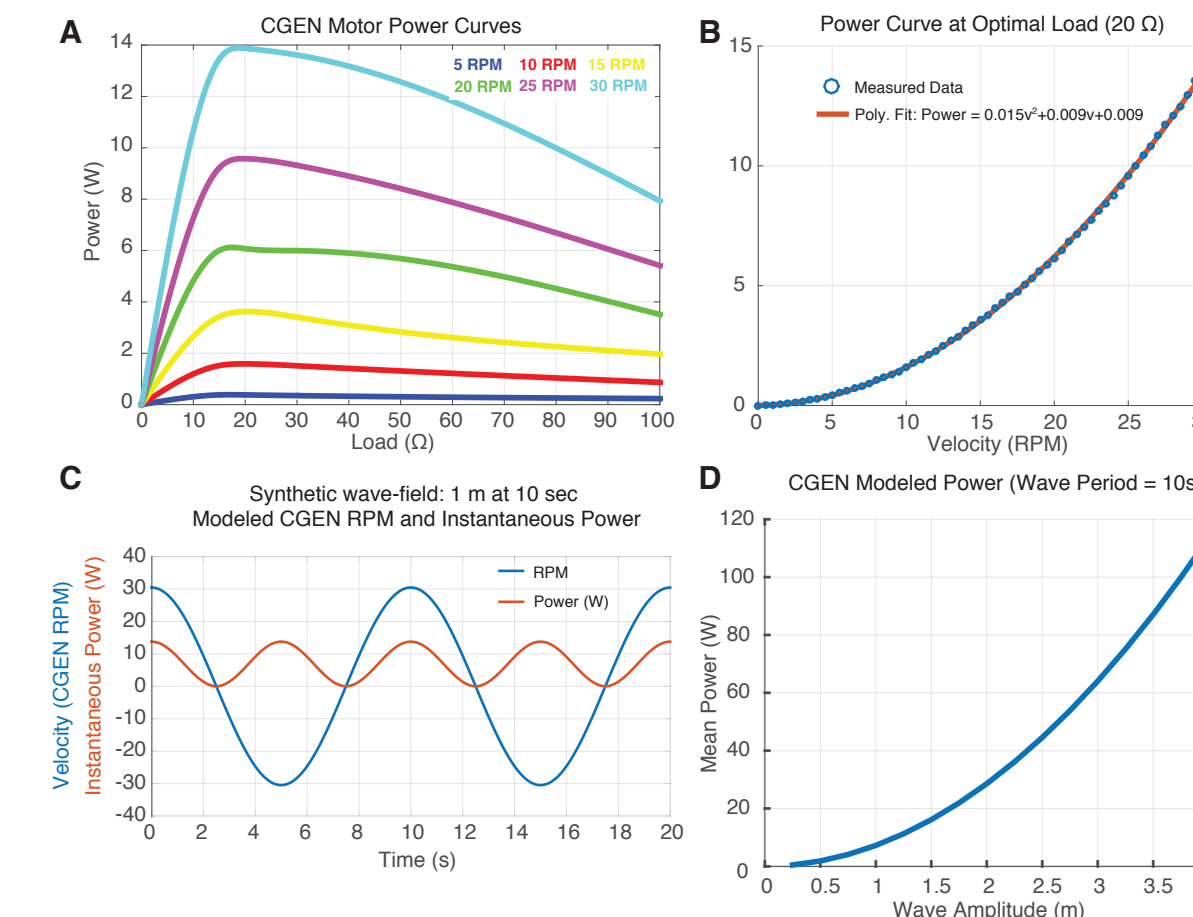
WAVE-POWERED GENERATION

A fully instrumented Wirewalker profiler with CTD, ADCP, dissolved oxygen, multi-band optics, and turbulence sensors. This is only a ~10 W package at full sampling rates, since the vehicle motion is driven by ocean wave energy.

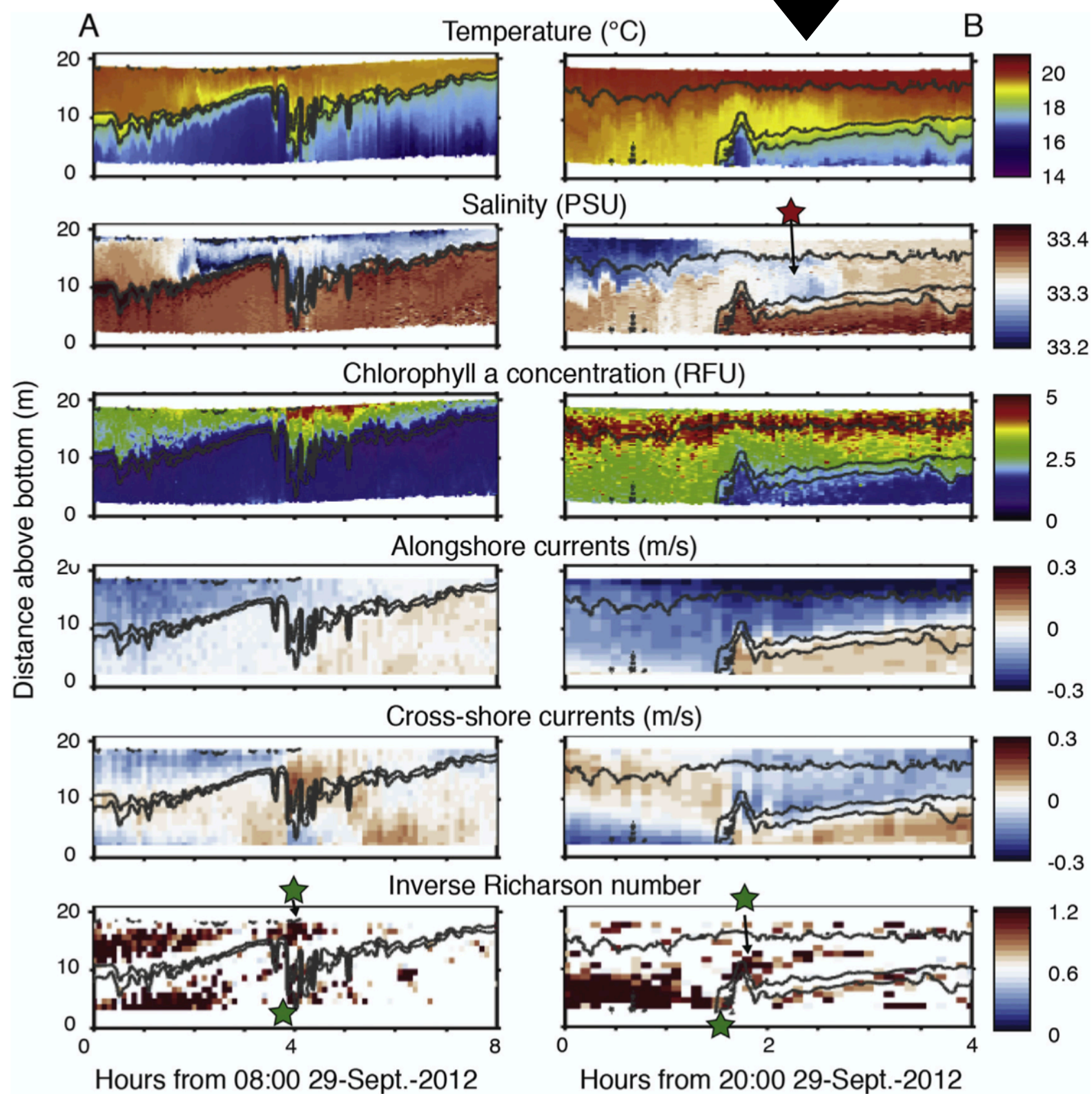
Field-proven by dozens of global deployments, the Wirewalker has enabled transformative advances in ocean monitoring. Here, the WW tracks a buoyant effluent plume in coastal waters in incredible detail.



Field testing the Livewire prototype aboard the Wirewalker profiler.



The Livewire prototype demonstrated the ability to produce >10 W from typical ocean waves.



The commercialization of the Livewire will:

- Build on our 15-year track record of achievement with the Wirewalker wave-powered profiling vehicle.
- Transform long-duration, high-bandwidth ocean monitoring by removing power limitations.
- Allow a new generation of sensors to be brought to bear on crucial ocean and environmental monitoring challenges.



Livewire Pitch video: <https://vimeo.com/391058168>

DMO Company website: <http://delmarocean.com>

Photograph, not CAD!

UC San Diego

SCRIPPS INSTITUTION OF OCEANOGRAPHY

2020 Scripps Corporate Alliance MEMBER