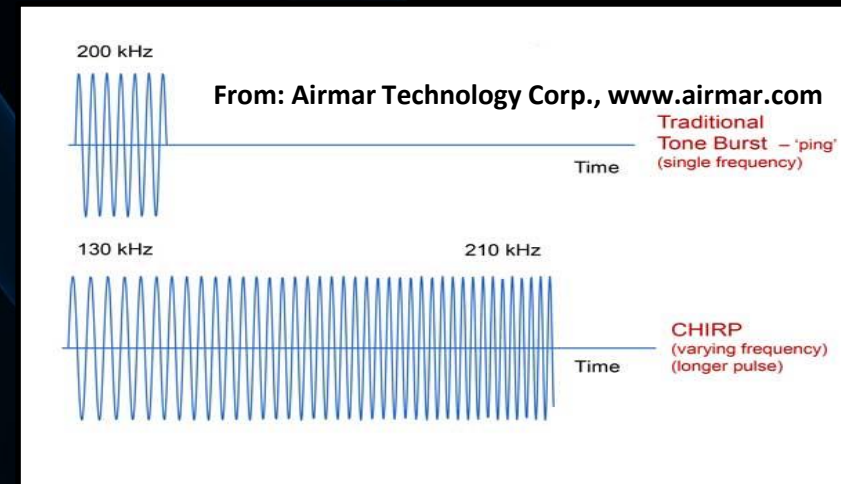
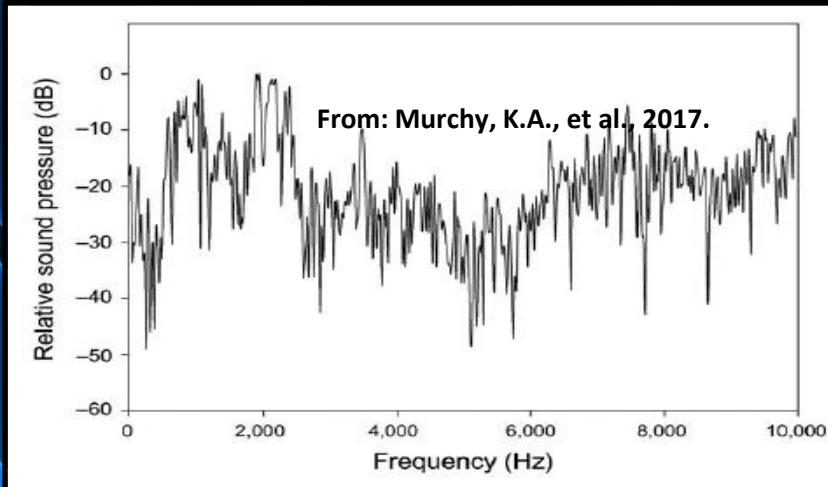


A Multi-sensory, Non-physical Barrier (NPB): Broadband Sonic, Ultrasonic, and Looming Light-Dark Patterns Stimulate C-Start Escape Reflexes in Fish.

Pulsating low frequency sound (< 20 kHz) and ultrasonic (20kHz - 200kHz) frequency modulation broadband sonar technology (“CHIRP”) will deter many fish species of many sizes.



Pulsating LED light arrays mimic a predatory threat by approaching dark moving objects - Stimulating “looming” visual perceptions and inducing innate, reflexive escape behavior in fish

Presented by
Fisheries Technology Associates, Inc.
<https://www.ftai.com/articles-media/dae-fish-protection>

